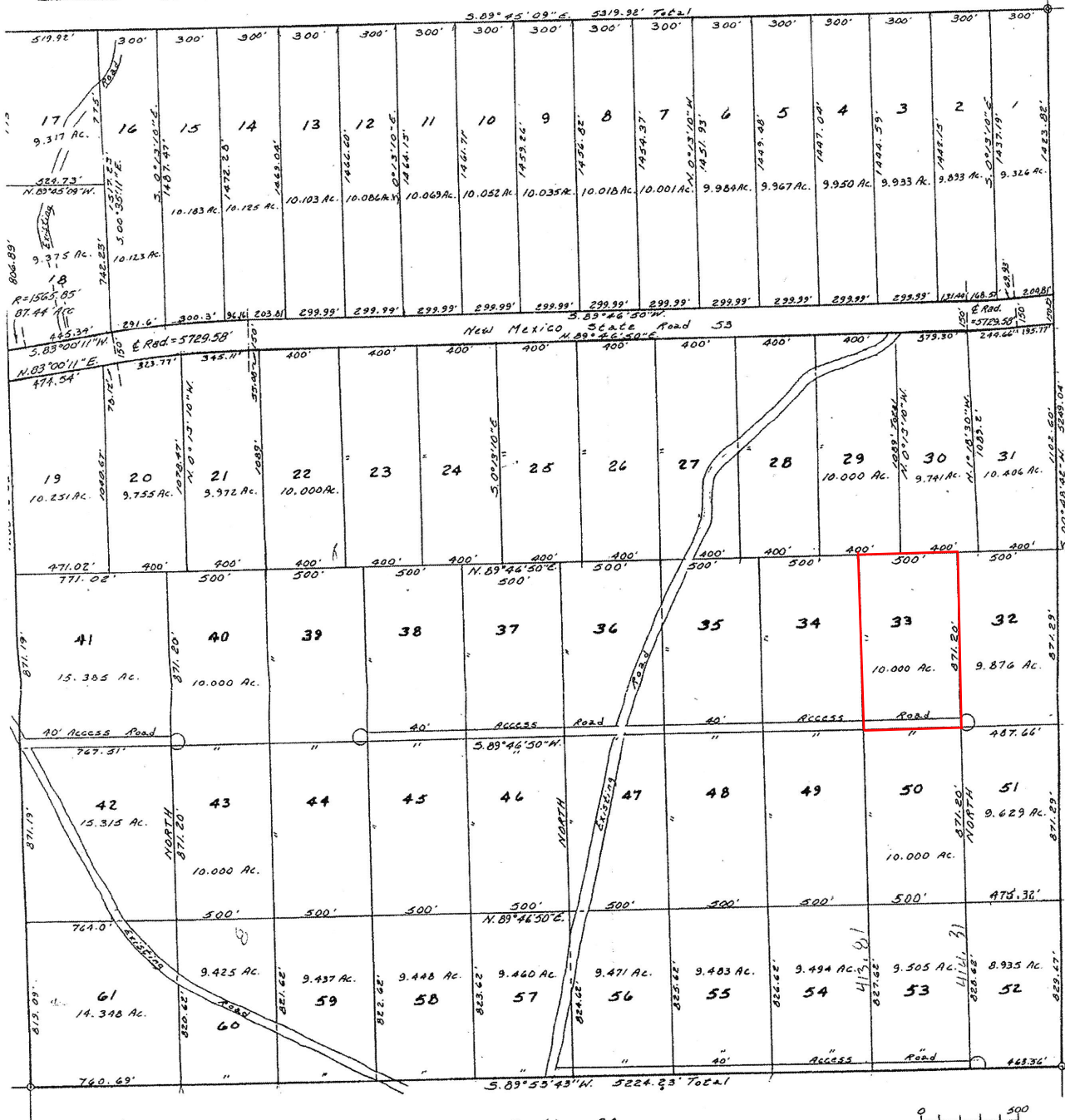


9:27 DEC 10 1975  
 DEPARTMENT OF REVENUE  
 OFFICE OF LAND ADMINISTRATION  
 Santa Fe, N.M.  
 Book 2552 Page 27859

Section 8



Section 20

0 500  
 Scale: 1" = 500'

# CIBOLA TRAILS

A SUBDIVISION, VALENCIA COUNTY, NEW MEXICO

SHEET 1 OF 6 SHEETS, COMPRISING SECTION 17  
 TOWNSHIP 8 NORTH, RANGE 13 WEST, N.M.P.M.

# 694

ELDER COMPANY OCTOBER, 1975 3399 ERE AFS KLH

