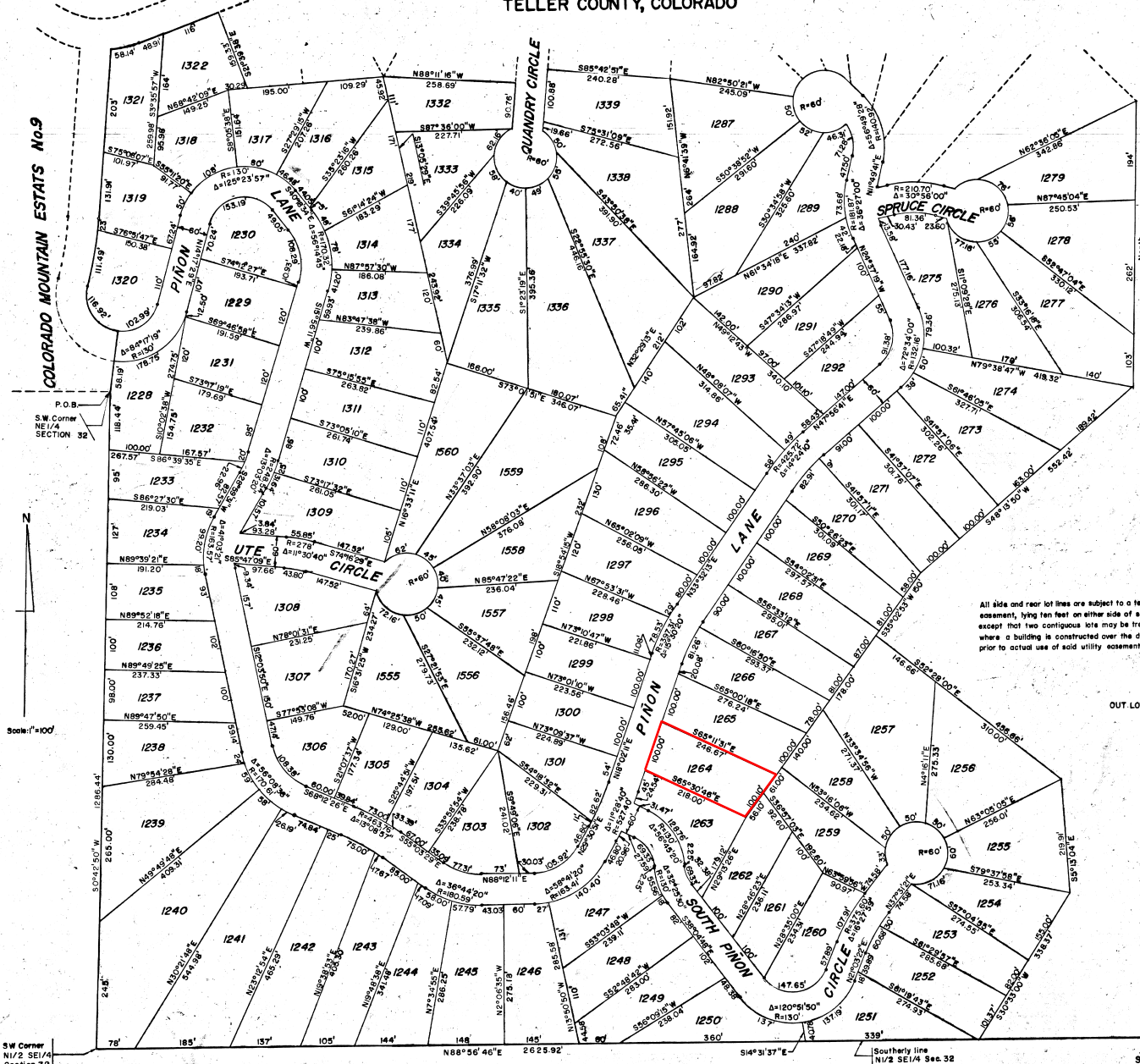


COLORADO MOUNTAIN ESTATES No. 10

TELLER COUNTY, COLORADO

C.M.E. No. 9

COLORADO MOUNTAIN ESTATES No. 9



All side and rear lot lines are subject to a ten-foot utility easement, lying ten feet on either side of said lot lines, except that two contiguous lots may be treated as one where a building is constructed over the dividing line prior to actual use of said utility easement.

SW Corner
N1/2 SE1/4
Section 32

Southern line
N1/2 SE1/4 Sec. 32

SHEET 2 OF 5

C-36