

VACATION AND REFILEING OF WESTCREEK LAKES SUBDIVISION NO. 2

DOUGLAS COUNTY
COLORADO

Karcich and Weber, Inc.
Engineers

COLORADO SPRINGS, COLORADO
MARCH 1969

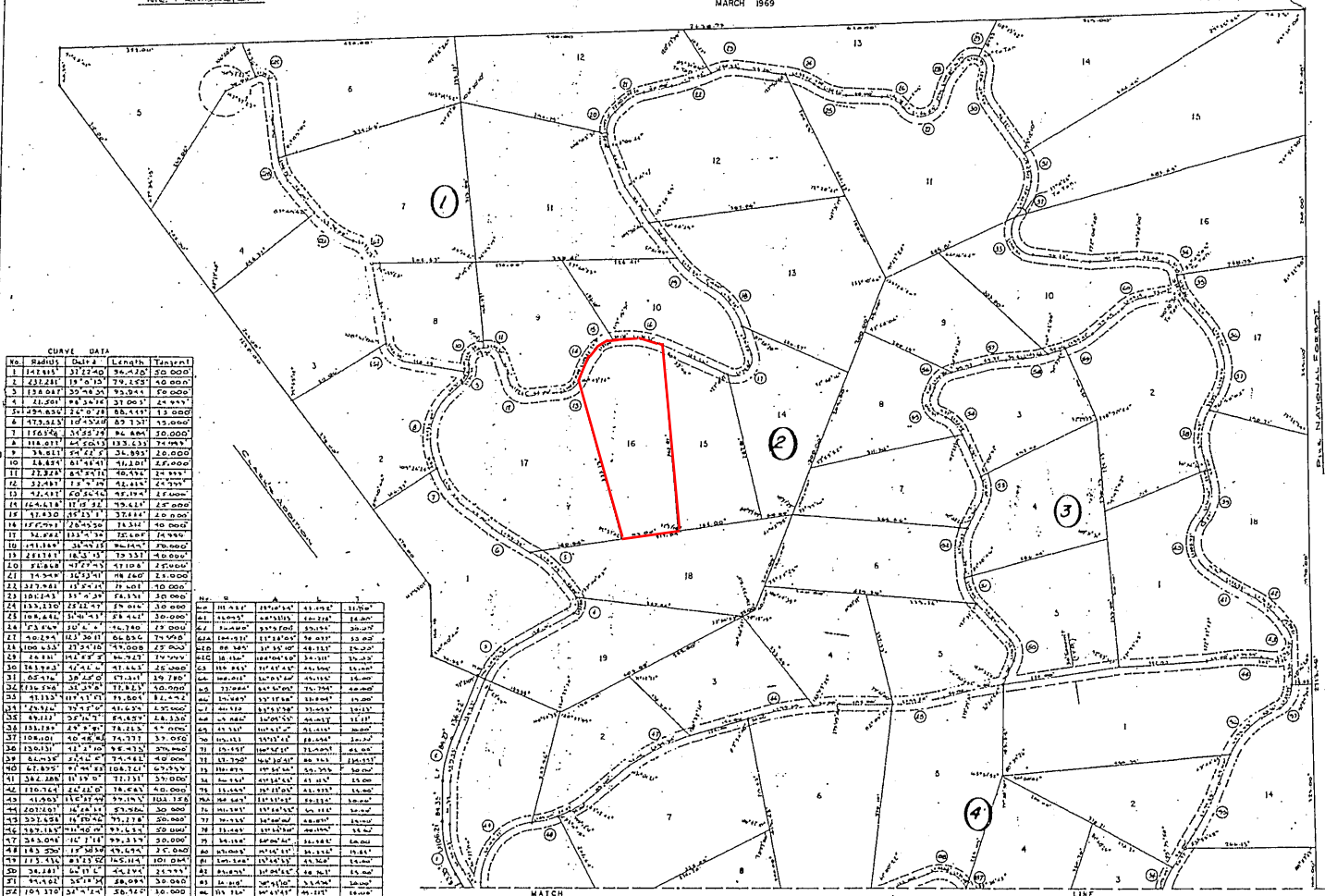
I, BETT A. CRAIG, County Clerk and Recorder of and for the County of Douglas, State of Colorado, do hereby certify that the foregoing is a true and correct copy of the original as it appears upon the records of this office, and under my hand and office seal this 11th day of March, A.D. 1969.



MS. PERRINSON

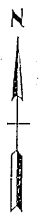
MS. AINSWORTH

Center Sec 30, T10S, R 69 W
Enrich Pl.

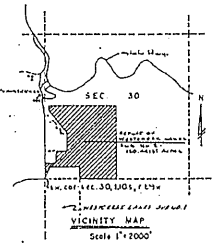


CURVE DATA

Sta	Bearing	Dist	Length	Central
1	S 71° 41' 11" E	37.7240	36.210	20.000
2	S 72° 21' 11" E	79.152	79.152	40.000
3	S 73° 01' 11" E	79.152	79.152	40.000
4	S 73° 41' 11" E	37.7240	36.210	20.000
5	S 74° 21' 11" E	37.7240	36.210	20.000
6	S 75° 01' 11" E	37.7240	36.210	20.000
7	S 75° 41' 11" E	37.7240	36.210	20.000
8	S 76° 21' 11" E	37.7240	36.210	20.000
9	S 77° 01' 11" E	37.7240	36.210	20.000
10	S 77° 41' 11" E	37.7240	36.210	20.000
11	S 78° 21' 11" E	37.7240	36.210	20.000
12	S 79° 01' 11" E	37.7240	36.210	20.000
13	S 79° 41' 11" E	37.7240	36.210	20.000
14	S 80° 21' 11" E	37.7240	36.210	20.000
15	S 81° 01' 11" E	37.7240	36.210	20.000
16	S 81° 41' 11" E	37.7240	36.210	20.000
17	S 82° 21' 11" E	37.7240	36.210	20.000
18	S 83° 01' 11" E	37.7240	36.210	20.000
19	S 83° 41' 11" E	37.7240	36.210	20.000
20	S 84° 21' 11" E	37.7240	36.210	20.000
21	S 85° 01' 11" E	37.7240	36.210	20.000
22	S 85° 41' 11" E	37.7240	36.210	20.000
23	S 86° 21' 11" E	37.7240	36.210	20.000
24	S 87° 01' 11" E	37.7240	36.210	20.000
25	S 87° 41' 11" E	37.7240	36.210	20.000
26	S 88° 21' 11" E	37.7240	36.210	20.000
27	S 89° 01' 11" E	37.7240	36.210	20.000
28	S 89° 41' 11" E	37.7240	36.210	20.000
29	S 90° 21' 11" E	37.7240	36.210	20.000
30	S 91° 01' 11" E	37.7240	36.210	20.000
31	S 91° 41' 11" E	37.7240	36.210	20.000
32	S 92° 21' 11" E	37.7240	36.210	20.000
33	S 93° 01' 11" E	37.7240	36.210	20.000
34	S 93° 41' 11" E	37.7240	36.210	20.000
35	S 94° 21' 11" E	37.7240	36.210	20.000
36	S 95° 01' 11" E	37.7240	36.210	20.000
37	S 95° 41' 11" E	37.7240	36.210	20.000
38	S 96° 21' 11" E	37.7240	36.210	20.000
39	S 97° 01' 11" E	37.7240	36.210	20.000
40	S 97° 41' 11" E	37.7240	36.210	20.000
41	S 98° 21' 11" E	37.7240	36.210	20.000
42	S 99° 01' 11" E	37.7240	36.210	20.000
43	S 99° 41' 11" E	37.7240	36.210	20.000
44	S 100° 21' 11" E	37.7240	36.210	20.000
45	S 101° 01' 11" E	37.7240	36.210	20.000
46	S 101° 41' 11" E	37.7240	36.210	20.000
47	S 102° 21' 11" E	37.7240	36.210	20.000
48	S 103° 01' 11" E	37.7240	36.210	20.000
49	S 103° 41' 11" E	37.7240	36.210	20.000
50	S 104° 21' 11" E	37.7240	36.210	20.000
51	S 105° 01' 11" E	37.7240	36.210	20.000
52	S 105° 41' 11" E	37.7240	36.210	20.000
53	S 106° 21' 11" E	37.7240	36.210	20.000
54	S 107° 01' 11" E	37.7240	36.210	20.000
55	S 107° 41' 11" E	37.7240	36.210	20.000
56	S 108° 21' 11" E	37.7240	36.210	20.000
57	S 109° 01' 11" E	37.7240	36.210	20.000
58	S 109° 41' 11" E	37.7240	36.210	20.000
59	S 110° 21' 11" E	37.7240	36.210	20.000
60	S 111° 01' 11" E	37.7240	36.210	20.000
61	S 111° 41' 11" E	37.7240	36.210	20.000
62	S 112° 21' 11" E	37.7240	36.210	20.000
63	S 113° 01' 11" E	37.7240	36.210	20.000
64	S 113° 41' 11" E	37.7240	36.210	20.000
65	S 114° 21' 11" E	37.7240	36.210	20.000
66	S 115° 01' 11" E	37.7240	36.210	20.000
67	S 115° 41' 11" E	37.7240	36.210	20.000
68	S 116° 21' 11" E	37.7240	36.210	20.000
69	S 117° 01' 11" E	37.7240	36.210	20.000
70	S 117° 41' 11" E	37.7240	36.210	20.000
71	S 118° 21' 11" E	37.7240	36.210	20.000
72	S 119° 01' 11" E	37.7240	36.210	20.000
73	S 119° 41' 11" E	37.7240	36.210	20.000
74	S 120° 21' 11" E	37.7240	36.210	20.000
75	S 121° 01' 11" E	37.7240	36.210	20.000
76	S 121° 41' 11" E	37.7240	36.210	20.000
77	S 122° 21' 11" E	37.7240	36.210	20.000
78	S 123° 01' 11" E	37.7240	36.210	20.000
79	S 123° 41' 11" E	37.7240	36.210	20.000
80	S 124° 21' 11" E	37.7240	36.210	20.000
81	S 125° 01' 11" E	37.7240	36.210	20.000
82	S 125° 41' 11" E	37.7240	36.210	20.000
83	S 126° 21' 11" E	37.7240	36.210	20.000
84	S 127° 01' 11" E	37.7240	36.210	20.000
85	S 127° 41' 11" E	37.7240	36.210	20.000
86	S 128° 21' 11" E	37.7240	36.210	20.000
87	S 129° 01' 11" E	37.7240	36.210	20.000
88	S 129° 41' 11" E	37.7240	36.210	20.000
89	S 130° 21' 11" E	37.7240	36.210	20.000
90	S 131° 01' 11" E	37.7240	36.210	20.000
91	S 131° 41' 11" E	37.7240	36.210	20.000
92	S 132° 21' 11" E	37.7240	36.210	20.000
93	S 133° 01' 11" E	37.7240	36.210	20.000
94	S 133° 41' 11" E	37.7240	36.210	20.000
95	S 134° 21' 11" E	37.7240	36.210	20.000
96	S 135° 01' 11" E	37.7240	36.210	20.000
97	S 135° 41' 11" E	37.7240	36.210	20.000
98	S 136° 21' 11" E	37.7240	36.210	20.000
99	S 137° 01' 11" E	37.7240	36.210	20.000
100	S 137° 41' 11" E	37.7240	36.210	20.000



Scale 1" = 100'



Correction
6/30/77
Rec. 202934
Book 310
Page 374