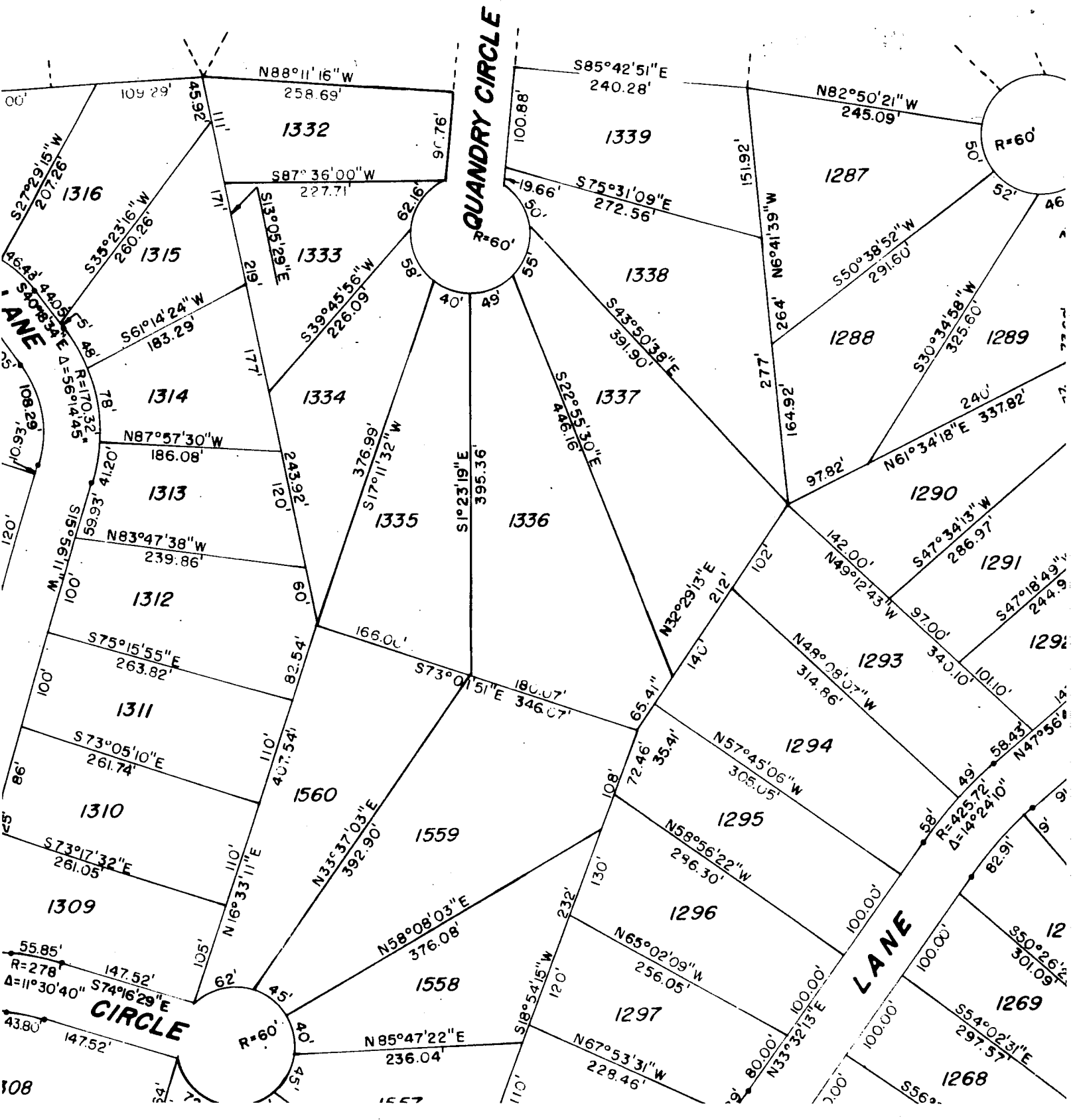
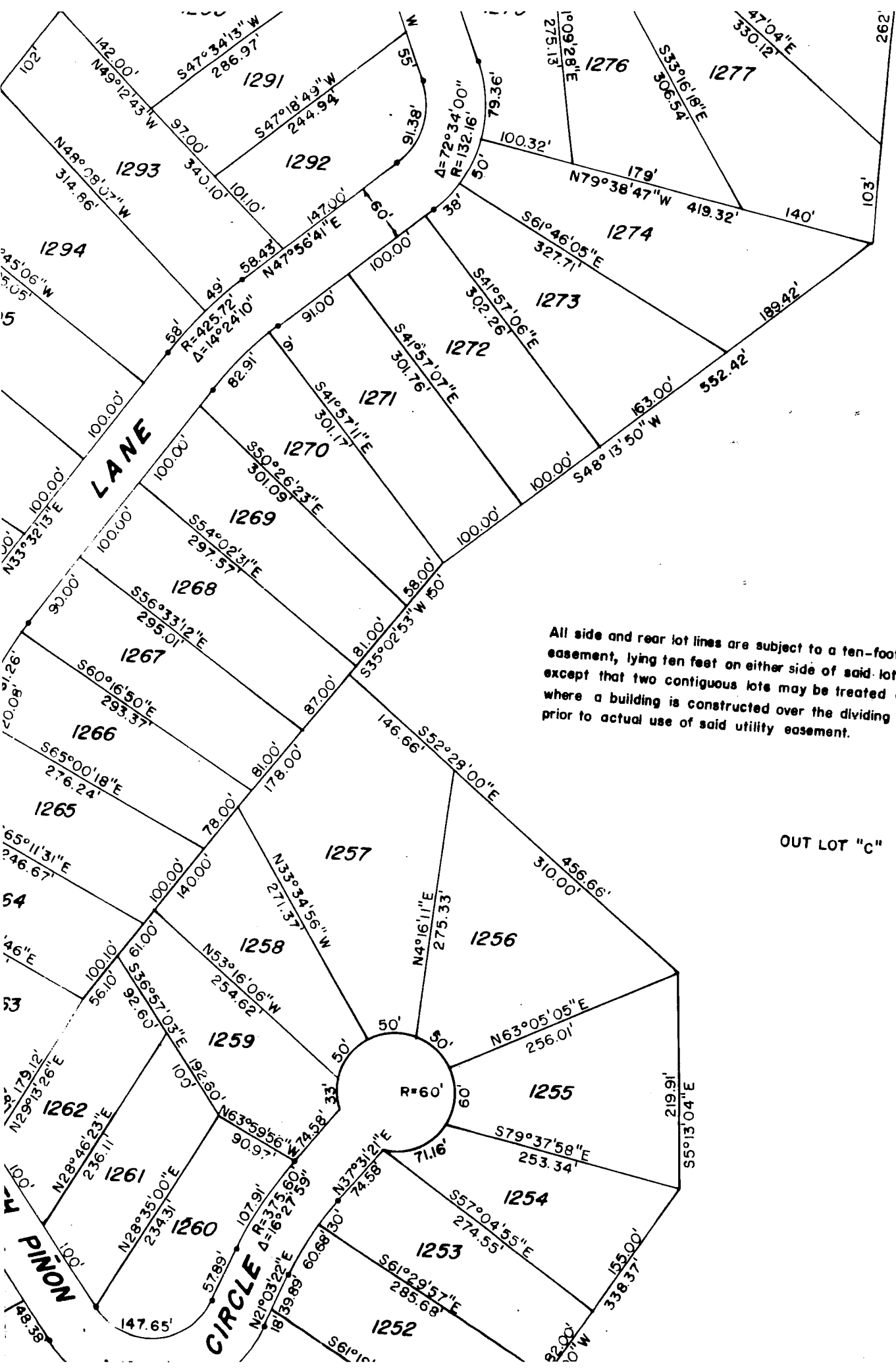


COLORADO MOUNTAIN ESTATES N

TELLER COUNTY, COLORADO





All side and rear lot lines are subject to a ten-foot utility easement, lying ten feet on either side of said lot lines, except that two contiguous lots may be treated as one where a building is constructed over the dividing line prior to actual use of said utility easement.

OUT LOT "C"