

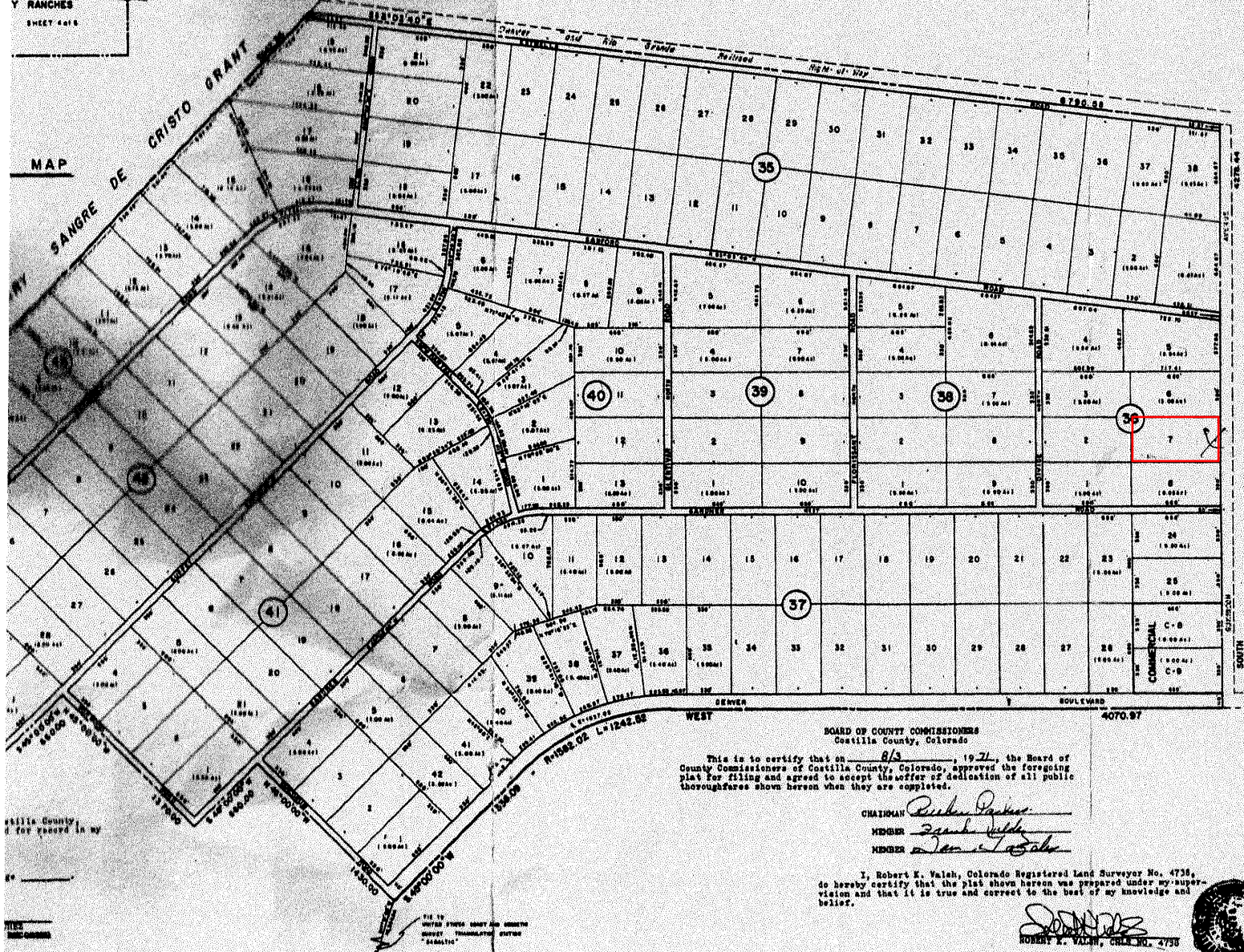
BLOCKS 35 thru 43
 UNIT TWENTY
SAN LUIS VALLEY RANCHES
 SANGRE DE CRISTO GRANT
 COSTILLA COUNTY, COLORADO

SHEET 5 OF 6

NOTE: PUBLIC UTILITIES EASEMENTS

All public utilities have the full rights-of-way.
 Lot lines are shown as particularly to street lines.
 There is a 10-foot utility easement along all sides of each lot.
 All bearings shown herein are based on meridian bearings as determined
 by the United States Coast and Geodetic Survey Triangulation Net of 1936.
 Distances along curved lines are arc lengths.
 All corners shall be 3/8" iron rebar, marked "4738", and
 identified for location by a 1"x2"x30" wooden stake painted red.
 Sheet Five contains a total of 190 lots.

SHEET 2416
 WENTY
 RANCHES
 SHEET 4416



BOARD OF COUNTY COMMISSIONERS
 Costilla County, Colorado

This is to certify that on 8/3, 1971, the Board of
 County Commissioners of Costilla County, Colorado, approved the foregoing
 plat for filing and agreed to accept the offer of dedication of all public
 thoroughfares shown hereon when they are completed.

CHAIRMAN Robert Parker
 MEMBER Samuel With
 MEMBER Tom T. Toole

I, Robert K. Walsh, Colorado Registered Land Surveyor No. 4738,
 do hereby certify that the plat shown hereon was prepared under my super-
 vision and that it is true and correct to the best of my knowledge and
 belief.

Robert K. Walsh
 ROBERT K. WALSH, C.R.S. NO. 4738



SURVEYING
 LAND PLANNING
 SUBDIVISION DESIGN

M
 MILLER & ASSOCIATES, INC.
 1425 ONE HUNDRED EIGHTH ST. N.E. DENVER, CO. 80218
 (303) 733-0000